

ISSUE

1 | intro

Welcome to the first edition of Issue!

This newsletter will keep you informed about the latest news from the Edinburgh Futures Institute – a bold new venture from the University of Edinburgh.

After months of collective work involving dozens of colleagues, EFI has become a reality. Still a virtual reality, given that the Old Royal Infirmary will open in 2021, but one that has already produced a number of successes, including a wonderful gift of £10million – the University's biggest ever capital donation.

EFI is a key component of the University's strategy for the recently secured **Edinburgh and South East of Scotland City Region Deal**. We will lead the way in the human, organisational, social, cultural and institutional aspects of data driven innovation.

I am pleased to announce that we have just launched the **Edinburgh Futures Institute Research Awards**, which will support interdisciplinary projects across the University.

We are developing a unique interdisciplinary platform of teaching and have developed an events programme that address many of the issues EFI will tackle.

Do get in touch! This is an exciting time for the Edinburgh Futures Institute, and we want you to be part of it. Whether you are a potential student, partner, donor or fellow academic, we would love to hear from you.

Find out how to get in touch.

Best wishes

Paolo Quattrone
Dean of Special Projects, CAHSS
Chair of Accounting, Governance and Social Innovation, UEBS

Research Awards launched

Applications are open for the Edinburgh Futures Institute Research Awards.

Funding of up to £5,000 will be awarded to support up to five research projects, which identify new interdisciplinary questions that can be taken forward as part of the EFI's vision.

The deadline is 28 February 2018.

Find out more



The Centre for Future Infrastructure

A new world-class centre of excellence on infrastructure systems is to become part of the Edinburgh Futures Institute.

The Centre for Future Infrastructure (CFI) will combine knowledge and expertise within the University's expertise in engineering, informatics, architecture, social and political studies and business school.

Read more on the EFI website

The EFI model

The EFI Masters programmes will break new ground in innovation, flexibility and interdisciplinarity. Students will take a project-based approach, designing their own pathways through courses which represent the best and most current thinking in their fields.

The programmes will be developed in partnership with local communities, industry and government, with student work celebrated in an annual 'Festival of Projects' open to all.

Scholarships will be offered to make access open to the brightest minds.



Futures Lectures series

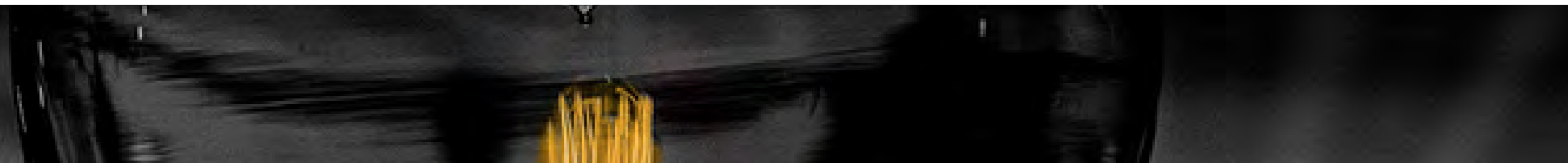
A new high-profile lecture series will showcase exemplary stories of interdisciplinary research.

The first Futures Lecture features British physicist Professor Dame Athene Donald from the University of Cambridge, on 18 May.

Please save the date.

Registration will soon available through Eventbrite.

Keep up-to-date with EFI events



The Old Royal Infirmary

We are delighted that the Edinburgh Futures Institute will be housed in the iconic former Royal Infirmary in 2021.

The grade A-listed building will bring together University students, staff and partners who will work collaboratively to challenge major socio-economic issues across the world.

Work is well underway to strip the historic building back to its former glory.

The external repair works to one wing of the building will start on site soon and design process for the main refurbishment and new build project is progressing well.



Upcoming events

9 February 2018

Schooling Data Citizens
9.30am
Paterson's Land
1.19, Moray House School of Education

18-20 April 2018

The Latent Image
Talbot Rice Gallery

12 February 2018

What a picture reveals and hides: The use and misuse of data visualisation
11:10am
G.8 Gaddum LT, 1 George Square

9 Feb 2018

Futures Lectures: Part 1
4pm
UoE Business School Auditorium

